

DELTONS
SMART
ACCESS CONTROLLER

K2 / K2F

Manual

DELTONS

Smart Access Controller K2/K2F

Model :	K2/K2F
Dimensions :	W79mm x H125mm x T15.5mm
Material :	Aluminum frame/Tempered glass panel
Communication :	Bluetooth 4.1
Supporting systems :	Android 4.3/IOS7.0 above
Stand-by current :	≈5mA
Operating current :	≈1A
Power supply :	12V
Unlocking time :	≈1.5S
Waterproof level :	IP66
Card capacity :	20,000 Cards

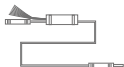
Accessories



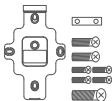
Access controller x1



Manual x1



Cable x1

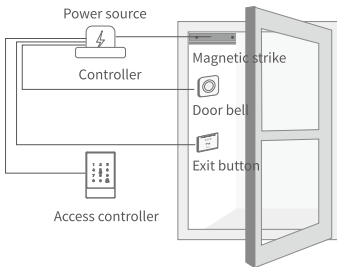


Hook x 1

Mounting plate x 1
Screw: 2+4+1

DELTONS

Illustration



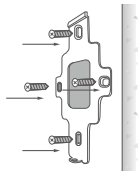
- 1 Drill a hole for the cable

Drill a hole at appropriate position to make space for the cable to connect to the power source.



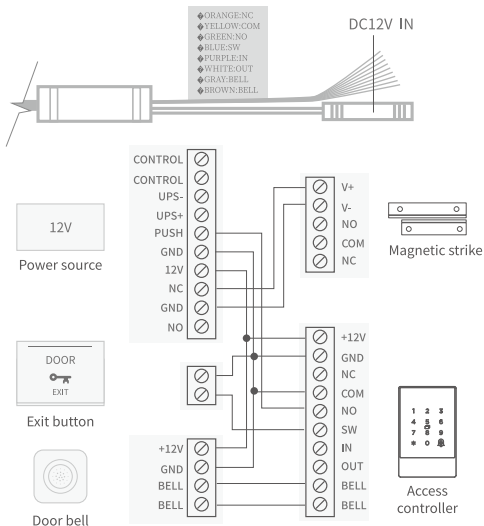
- 2 Install the mounting plate

Fix the mounting plate with 4 screws.



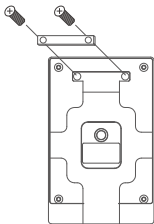
3 Wiring

Connect the cable of the access controller to power cable and other ports according to the illustration.

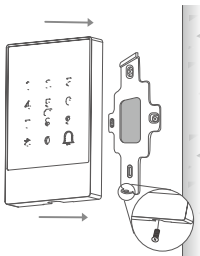


4 Install the hook

Fix the hook to the mounting plate with 2 screws.

**5** Install the access controller

Fit the access controller into the hook and fix it on the mounting plate with a screw in the bottom.



Pair the access controller with app

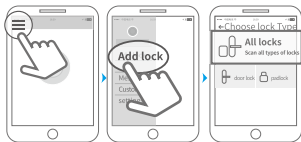
- 1 Tap the panel to light it up and activate the lock.



- 2 On voice prompt "Please add Bluetooth Administrator", activate the APP.



- 3 Tap the "☰" icon on the upper left corner, tap "Add Lock", select "Door Lock".



- 4 Tap the device shown on the screen. Wait a few seconds till the lock gives a voice prompt/long beep, which means it is added successfully.



⚠ Notice: If fails, please shut off the APP and Bluetooth turn them on and try the above process again.

Limited Warranty

1. For any defect in material and workmanship, the original purchaser of the product
 - 1)Can return or ask for a replacement within 7 invoice days.
 - 2)Can ask for a replacement within 15 invoice days.
 - 3)Can ask for free repair in 365 invoice days.
2. This warranty does not cover defects caused by modification, alteration, misuse or physical abuse of the product.